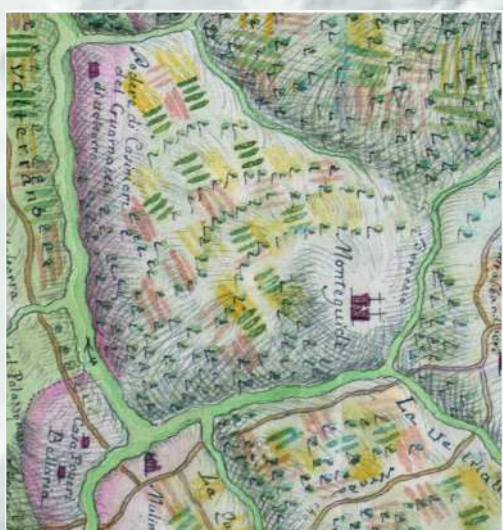


# Comune di Casole d'Elsa

SOCIETA' AGRICOLA MONTEGUIDI  
P.A.P.M.A.A. 2019



Progettisti:  
arch. Riccardo Bartoloni  
arch. Riccardo Bertini  
arch. Maria Dambrósio  
Collaboratrici:  
arch. Tosca Bertini  
arch. Maria Di Stefano  
dot. arch. Leda Curzio

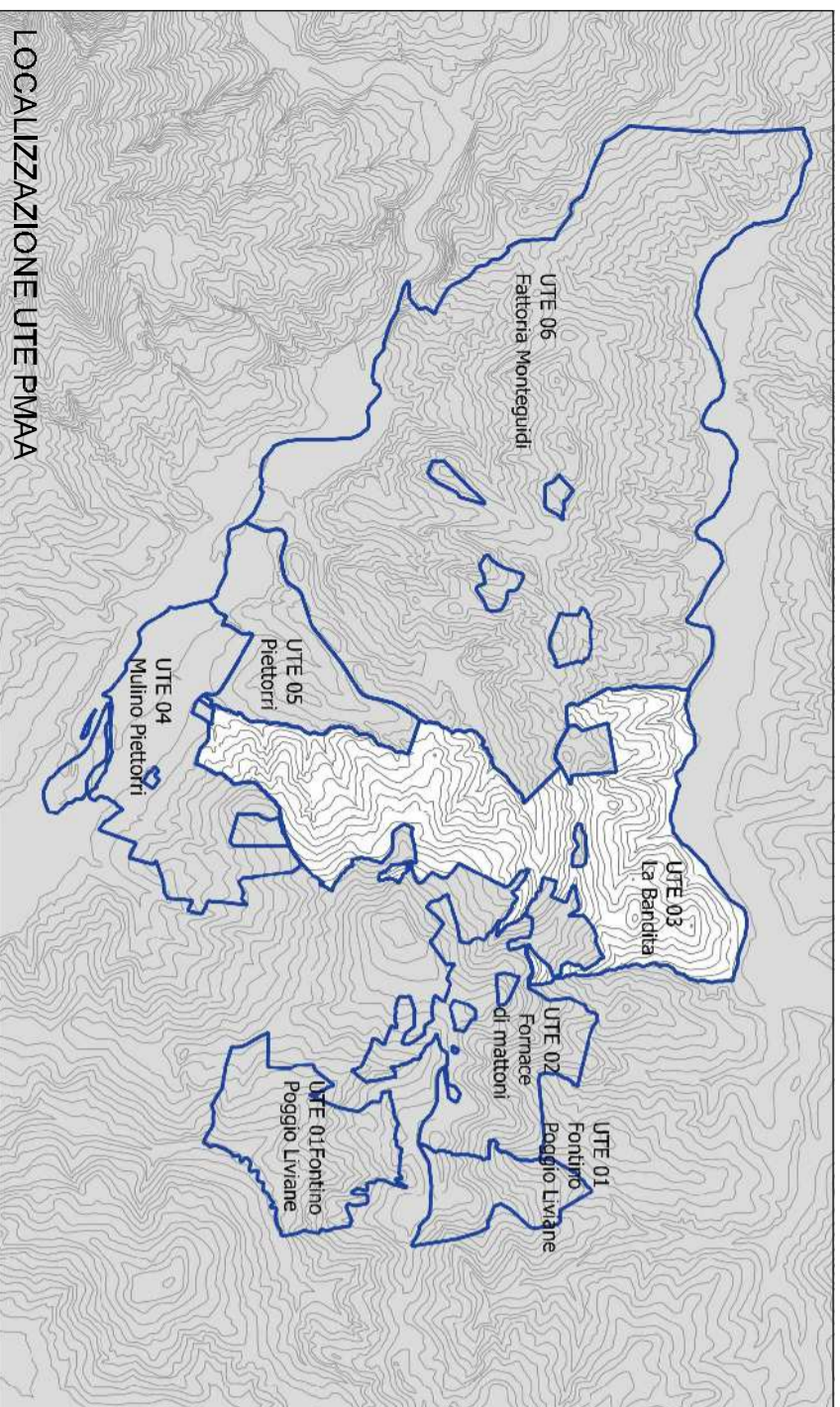
Consulenza agronomica:  
agr. Simone Carrara - Studio Demetra

Consulenza geologica:  
Dot. Paolo Castellani

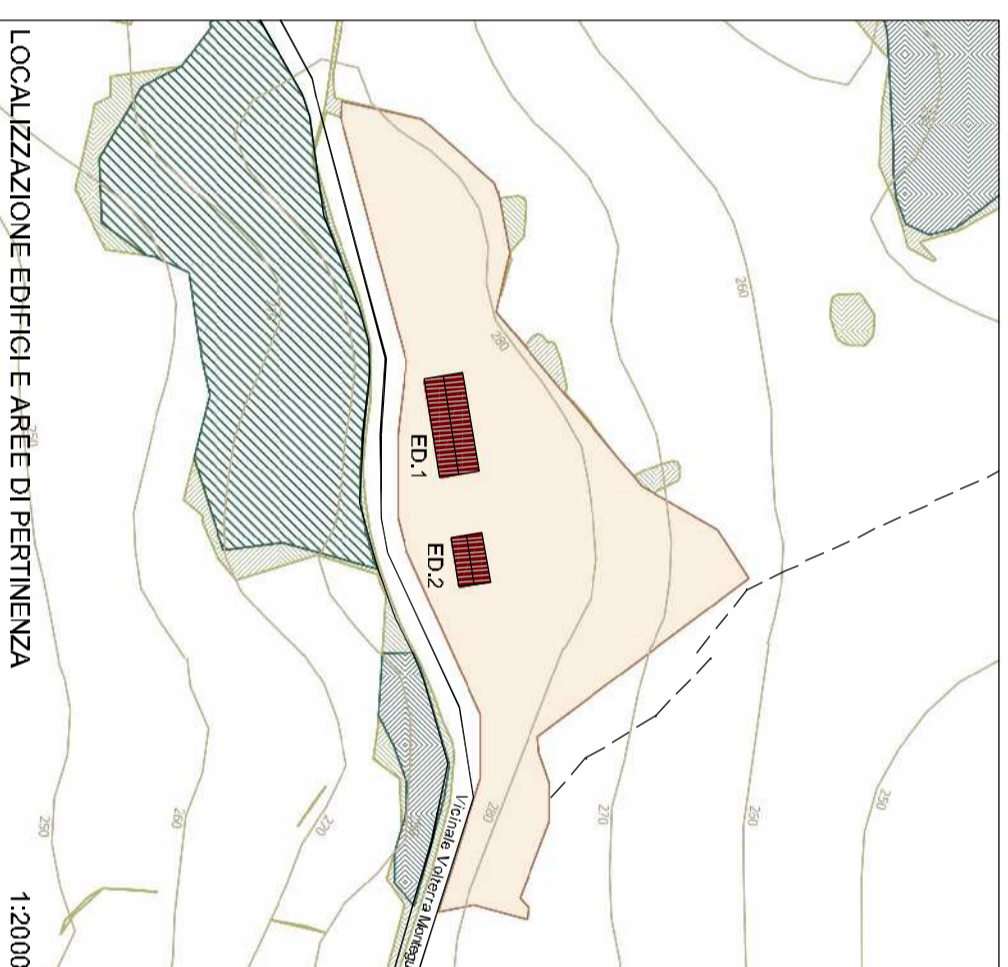
Tavola n. F02

UTE 03

Trasformazioni Edilizie

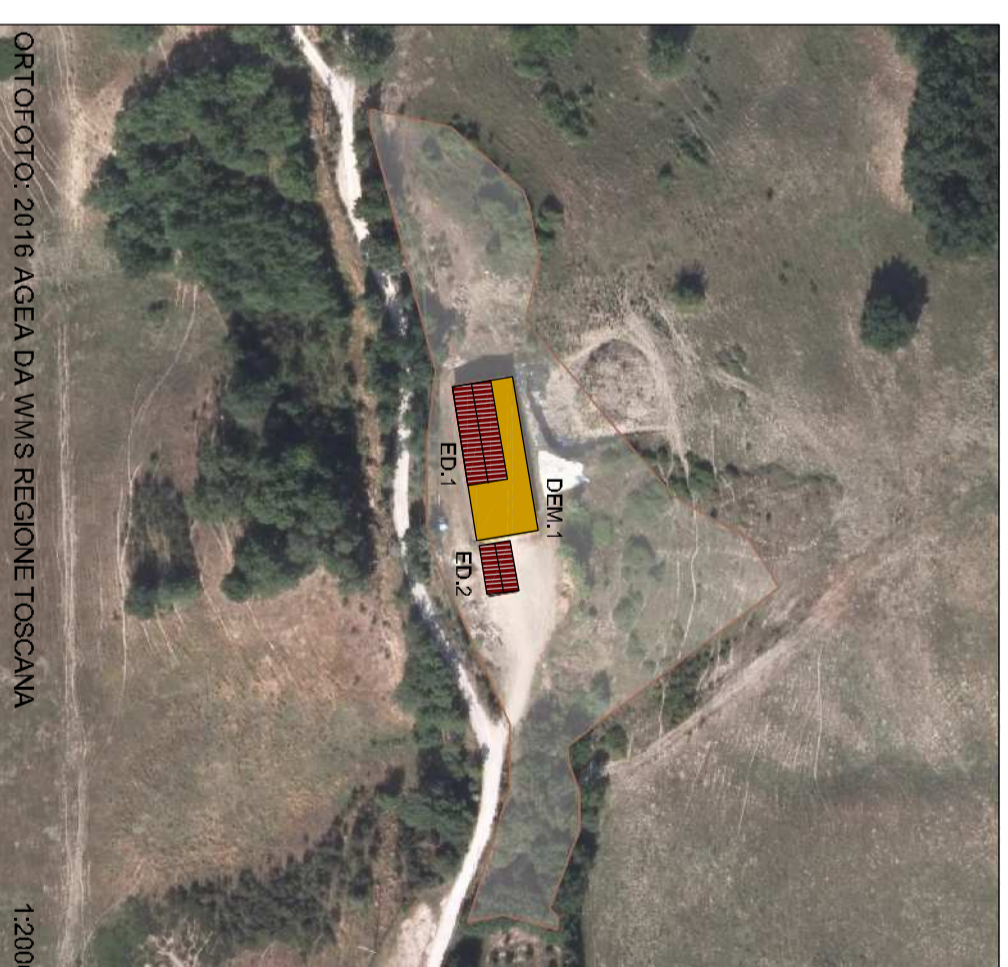


LOCALIZZAZIONE UTE PMAA



LOCALIZZAZIONE EDIFICI E AREE DI PERTINENZA

1:2000

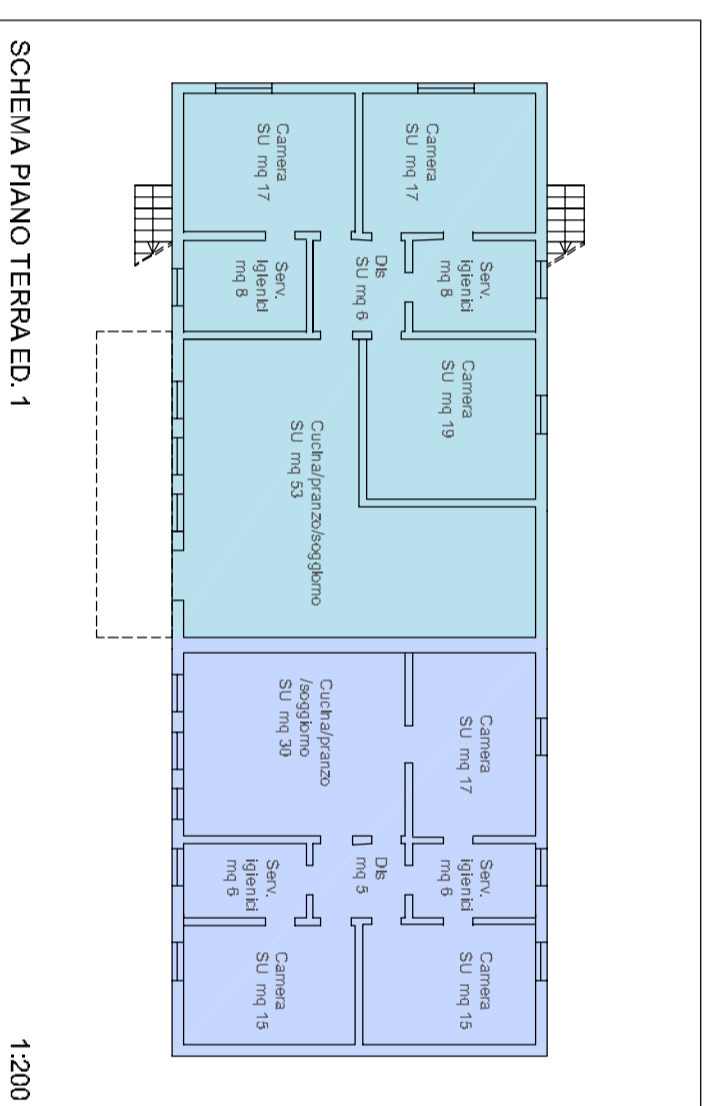
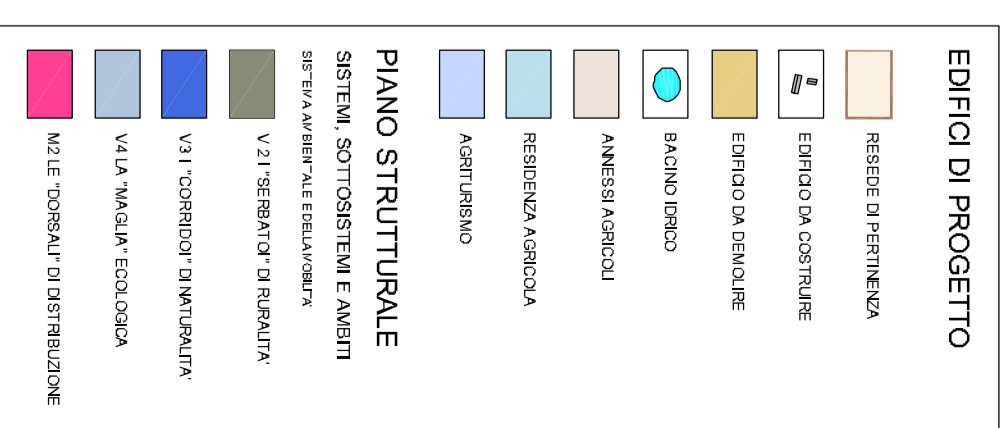


ORTOFOTO: 2016 AGEA DA WMS REGIONE TOSCANA

1:2000

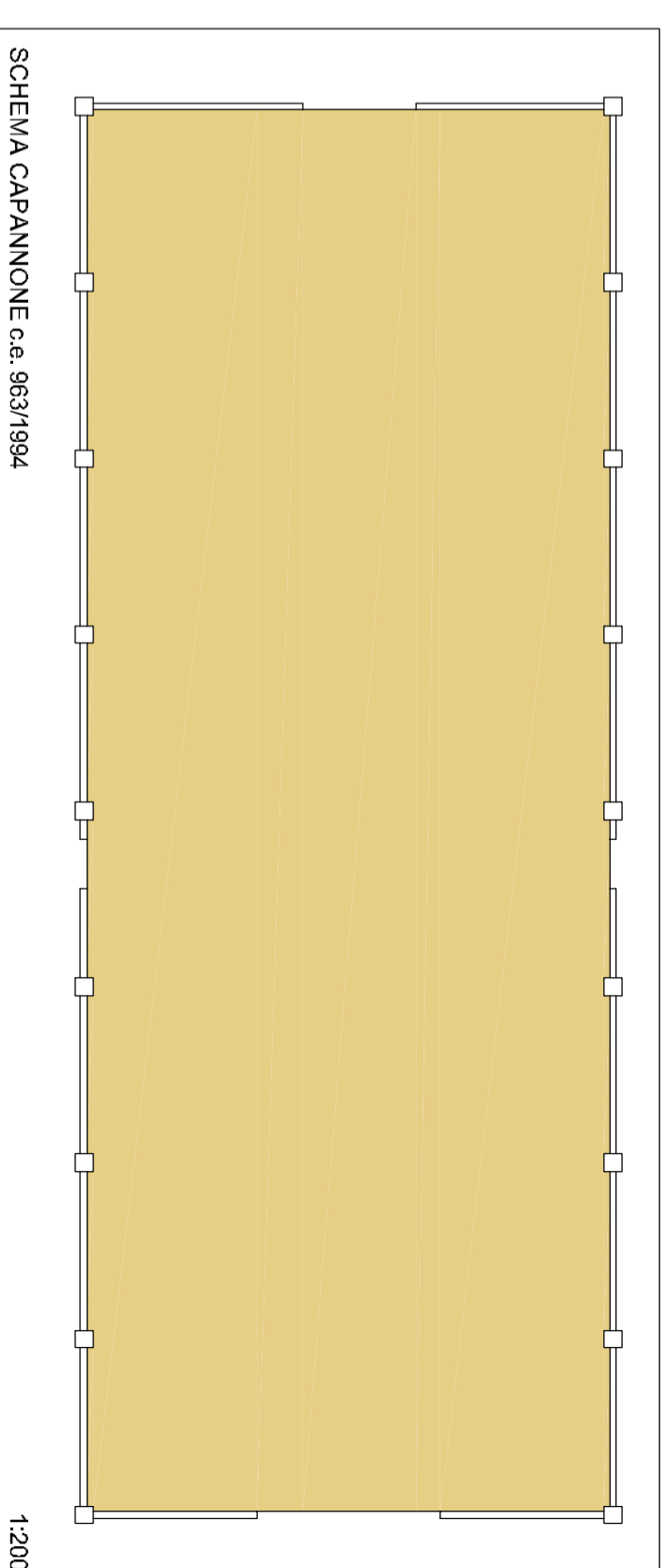


PS



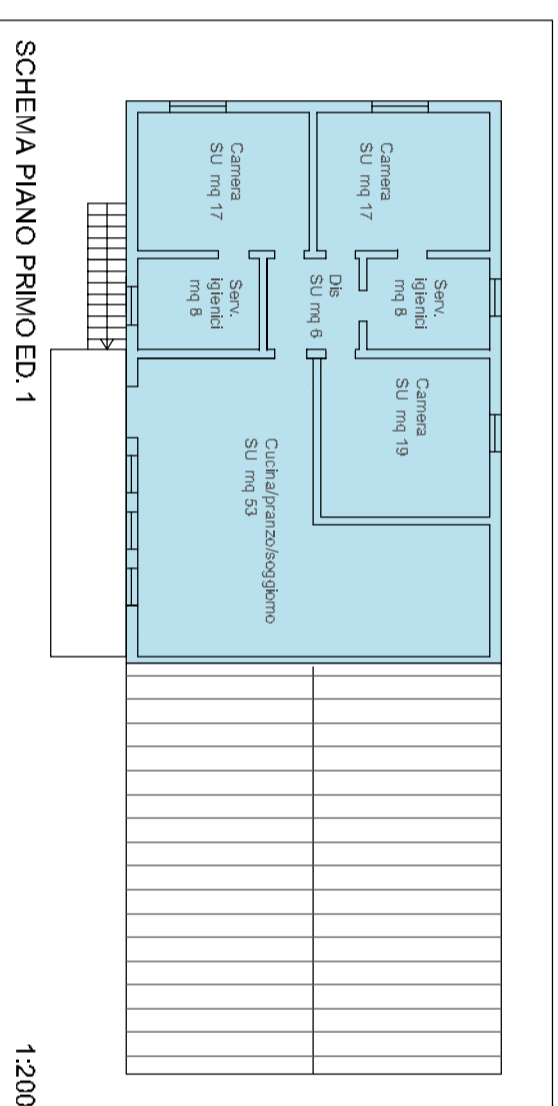
SCHEMA PIANO TERRA ED. 1

1:200



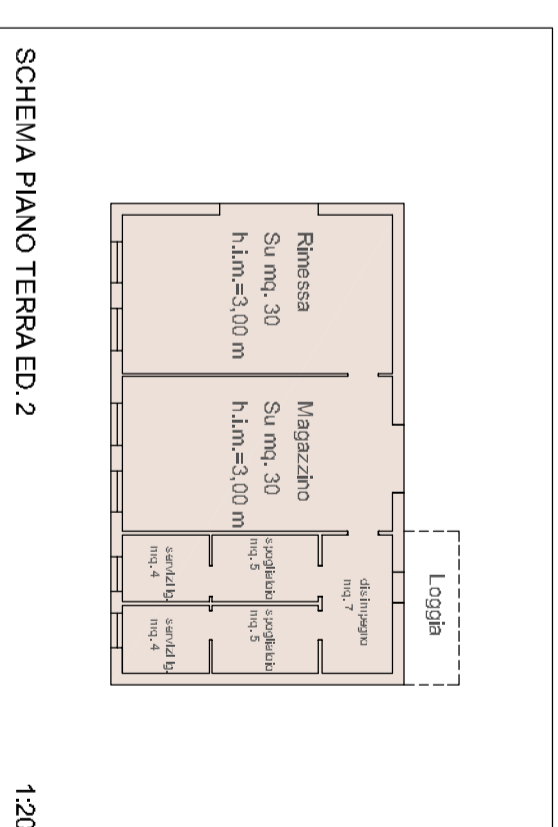
SCHEMA CAPANNONE c.e. 963/1994

1:200



SCHEMA PIANO PRIMO ED. 1

1:200



SCHEMA PIANO TERRA ED. 2

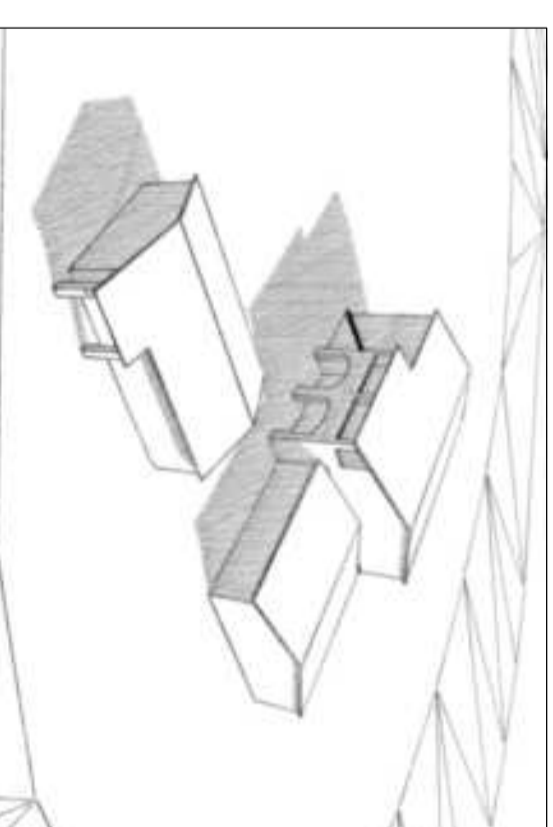
1:200



CAPANNONE c.e. 963/1994



PANORAMICA VERSO LOCALITA' MANDRIA



UTE 3 - LA BANDITA					
STATO ATTUALE					
VOLUME LORDO	mc. 3.434,00				
SUPERFICIE UTILE LORDA	mq. 627,50				
VARIAZIONE					
VOLUME LORDO	mc. -1.334,00				
SUPERFICIE UTILE LORDA	mq. -117,50				
STATO PROGRAMMATO					
VOLUME LORDO	mc. 2.100,00				
SUPERFICIE UTILE LORDA	mq. 510,00				
RIPARTIZIONE DELLA SUPERFICIE UTILE AGRICOLA					
residenza agricola	minima	agriturismo e attività connesse	minima	annessi agricoli	minima
assegnata	150,00	assegnata	110,00	assegnata	80,00