

Comune di Casole d'Elsa

SOCIETA' AGRICOLA MONTEGUIDI
P.A.P.M.A.A. 2019



Progettisti.

arch. Riccardo Bartoloni

arch. Riccardo Bertini

arch. Maria Dambrosio

Collaboratrici:

arch. Tosca Bertini

arch. Maria Distefano

dott. arch. Leda Curzio

Consulenza agronomica:

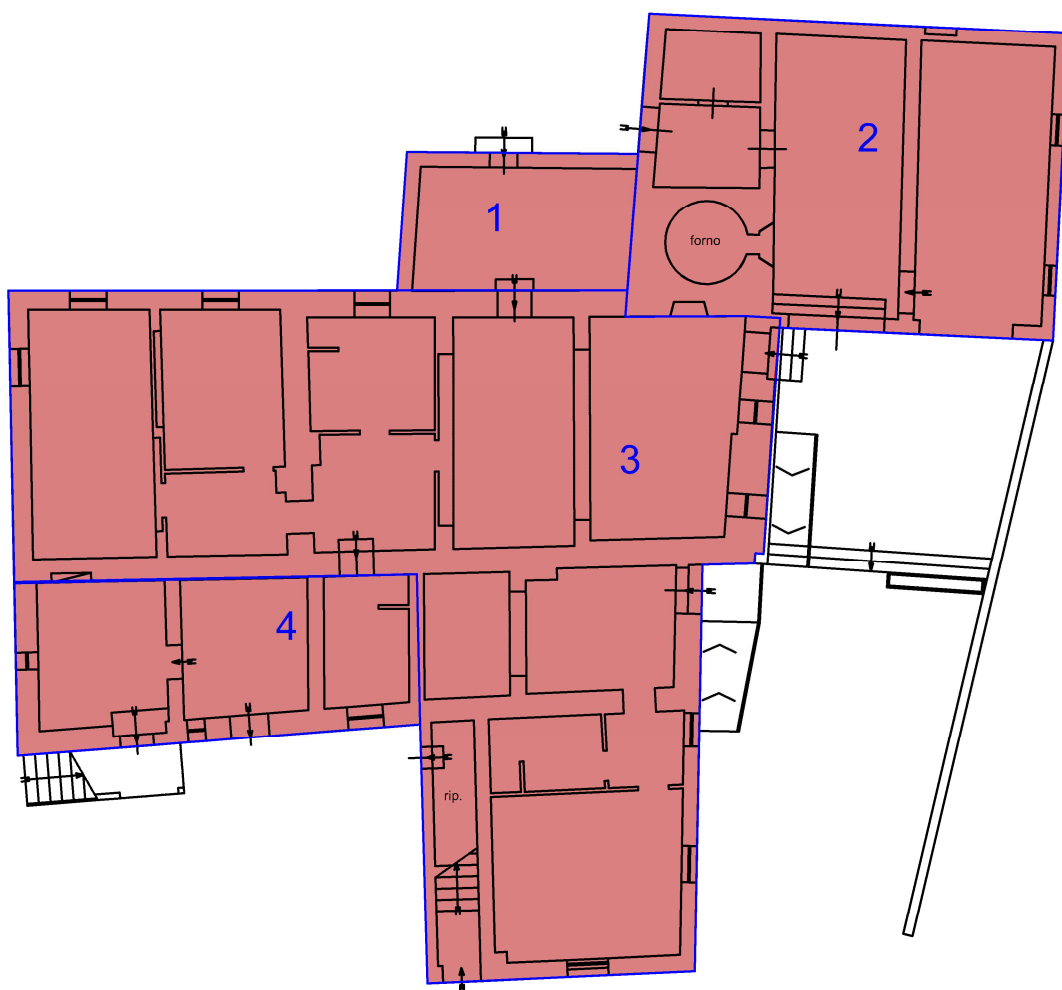
agr. Simone Carrara - Studio Demetra

Consulenza geologica:

dott. Paolo Castellani

A05

SCHEDE EDIFICI ESISTENTI



PIANTA PIANO TERRA
Scala 1:200

PIETTORRI - Fabbricato A

SUPERFICIE UTILE LORDA

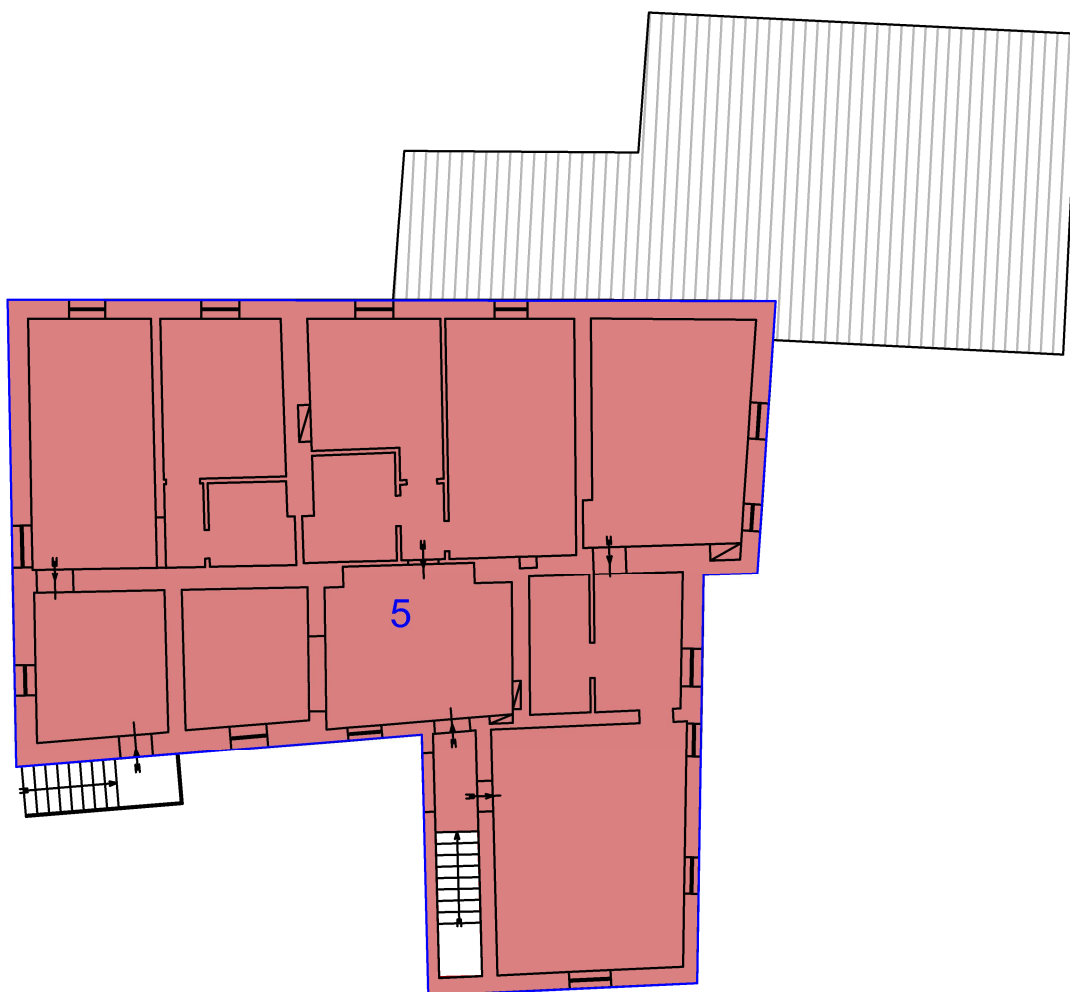
Piano terra: 385,00 mq
Piano piano: 271,00 mq

Totale: 656,00 mq

SUPERFICIE UTILE

Piano terra: 273,00mq
Piano piano: 203,00mq

Totale: 476,00mq



PIANTA PIANO PRIMO
Scala 1:200

PIETTORRI - Fabbricato A

VOLUME LORDO

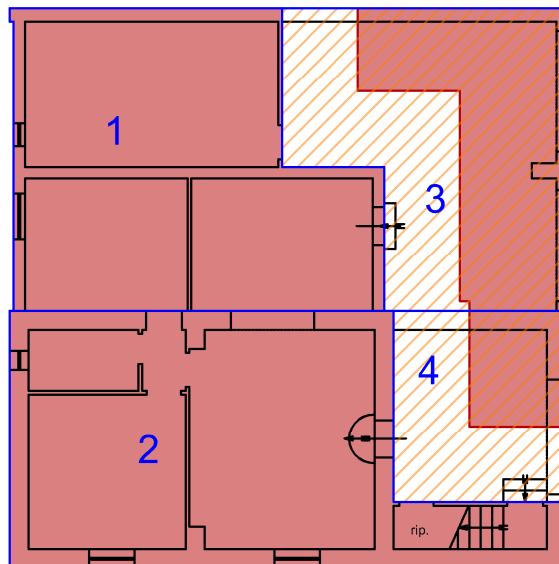
Piano terra:

- 1) 3,12 (h) x 22,20=69,30 mc
- 2) 3,20 (h) x 91,33=292,15 mc
- 3) 2,90 (h) x 226,97=658,20 mc
- 4) 2,48 (h) x 45,69=113,35 mc

Primo piano:

- 5) 3,90 (h) x 275,40=1074,00 mc

Totale: 2207,00mc



PIANTA PIANO TERRA
Scala 1:200

PIETTORRI - Fabbricato B

SUPERFICIE UTILE LORDA

Piano terra: 181,00 mq

Piano piano: 98,50 mq

Totale: 279,50mq

SUPERFICIE UTILE

Piano terra: 110,20mq

Piano piano: 75,80mq

Totale: 186,00mq

VOLUME LORDO

Piano terra:

1) 3,37 (h) x 67,09=226,40 mc

2) 3,00 (h) x 76,98=230,70 mc

3) 3,25 (h) x 49,74=161,50 mc

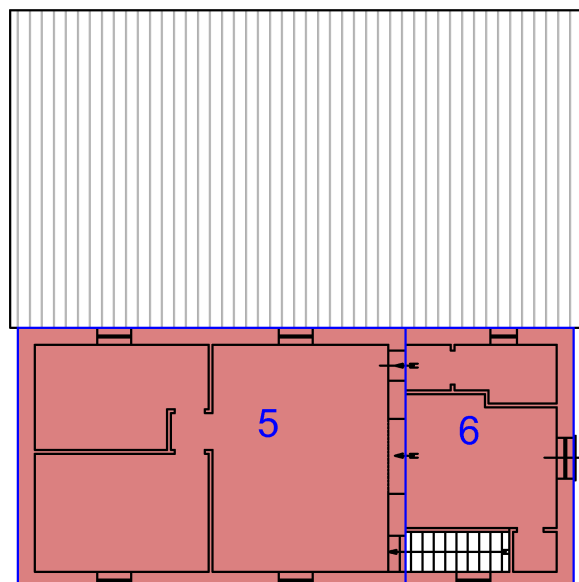
4) 3,20 (h) x 22,97=73,50 mc

Primo piano:

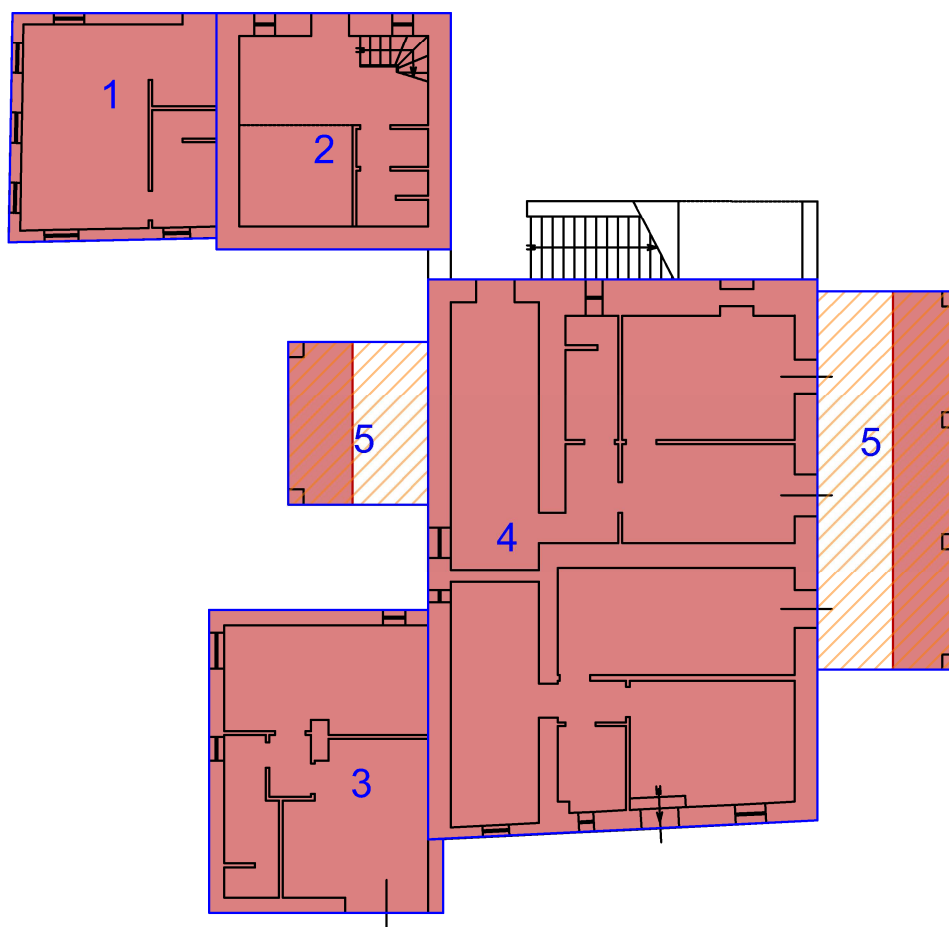
5) 3,50 (h) x 70,72=247,50 mc

6) 2,75 (h) x 30,7= 84,40 mc

Totale: 1024,00 mc



PIANTA PIANO PRIMO
Scala 1:200



PIANTA PIANO TERRA - Edificio principale
Scala 1:200

MOLINO PIETTORRI - Edificio principale

SUPERFICIE UTILE LORDA

Piano terra: 293,35 mq
Primo piano: 178,15 mq

Totale: 471,50mq

SUPERFICIE UTILE

Piano terra: 194,00mq
Primo piano: 114,00mq

Totale: 308,00mq

VOLUME LORDO

Piano terra:

1) $3,27(h) \times 32,92 = 107,81$ mc

2) $3,95(h) \times 38,97 = 153,93$ mc

3) $3,17(h) \times 47,17 = 149,53$ mc

4) $2,90(h) \times 149,90 = 434,71$ mc

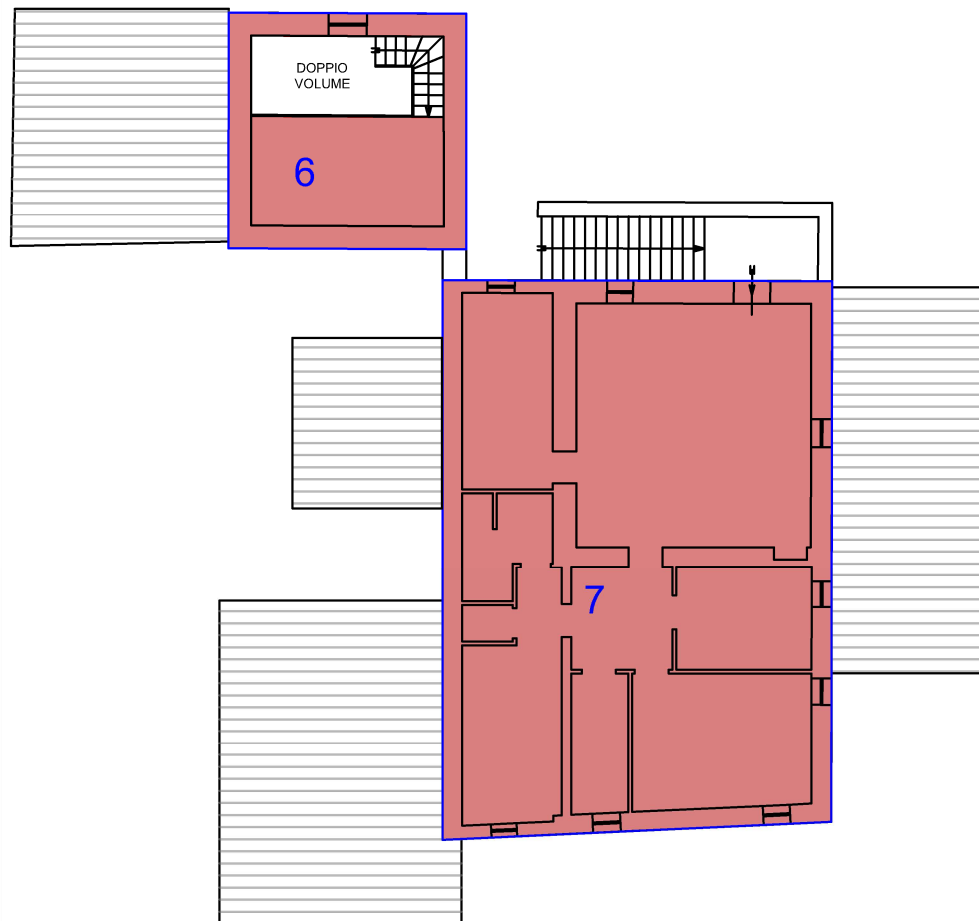
5) $3,00(h) \times 52,91 = 158,73$ mc

Primo piano:

6) $2,70(h) \times 39,40 = 106,38$ mc

7) $3,25(h) \times 149,66 = 486,41$ mc

Totale: 1597,50 mc



PIANTA PIANO PRIMO - Edificio principale
Scala 1:200

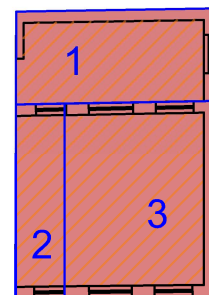
MOLINO PIETTORRI -
Annesso

SUPERFICIE UTILE LORDA

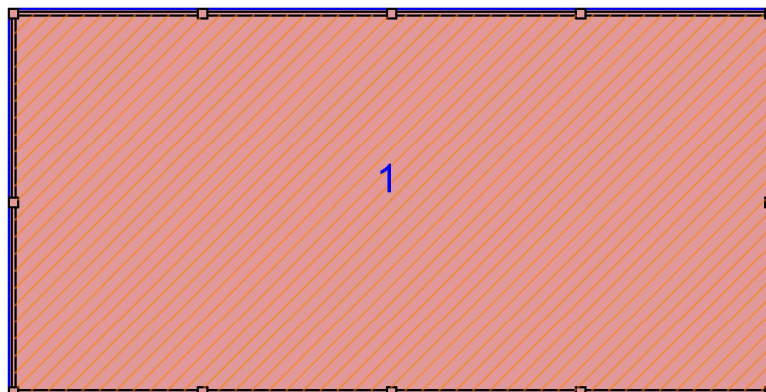
Piano terra: 40,00 mq

VOLUME LORDO :

1)	2,70 (h) x 12,80=	34,50 mc
2)	3,02 (h)x 6,54=	19,70 mc
3)	2,92 (h)x 20,66=	60,30 mc
Totale		114,50 mc



PIANTA PIANO TERRA- Annesso
Scala 1:200



PIANTA PIANO TERRA - Capannone (conc 996/94)
Scala 1:200

LOC. PIETRASANTA -
Capannone (conc 996/94)

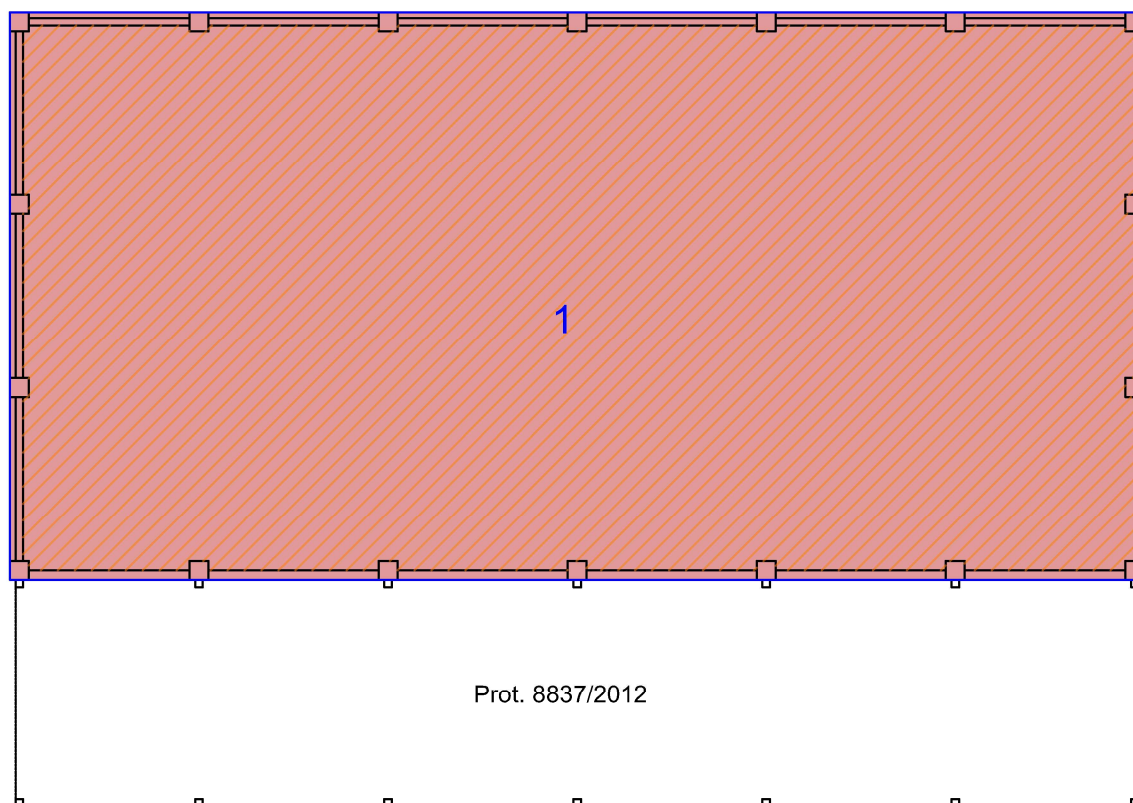
SUPERFICIE UTILE LORDA

Piano terra: 207,50 mq

VOLUME LORDO

Piano terra:

1) 3,68 (h) x 207,50=763,00 mc



PIANTA PIANO TERRA - Capannone (conc. 23/2000)
Scala 1:200

LOC. PIETRASANTA -
Capannone (conc. 23/2000)

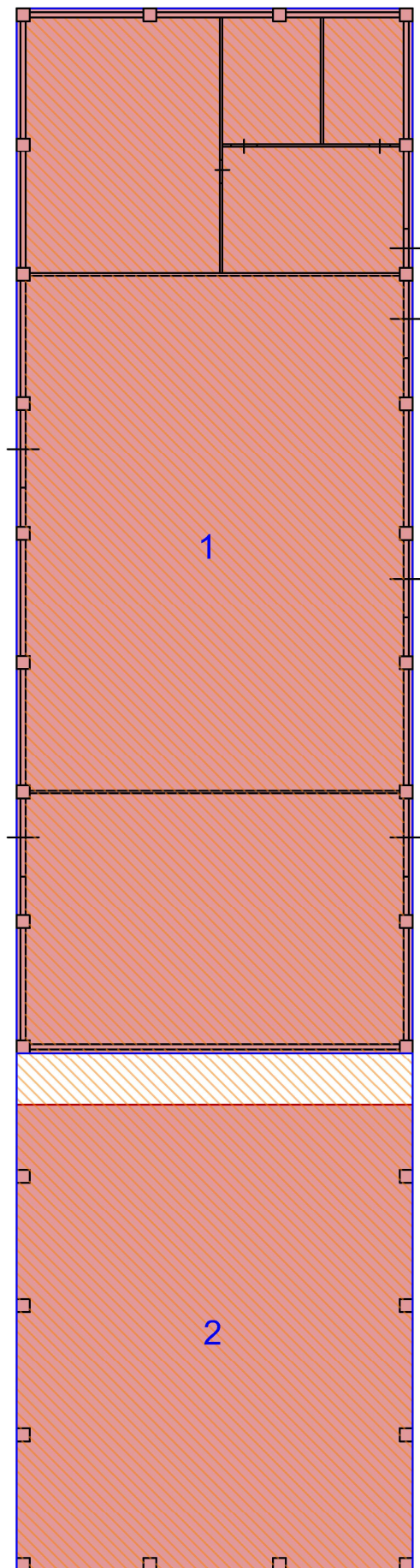
SUPERFICIE UTILE LORDA

Piano terra: 450,00 mq

VOLUME LORDO

Piano terra:

1) 5,70 (h) x 450,00=2565 mc



PIANTA PIANO TERRA
Capannone e fienile (conc. 808/91)
Scala 1:250

LOC. PIETRASANTA -
Capannone e fienile (conc. 808/91)

SUPERFICIE UTILE LORDA

Piano terra: 892 mq

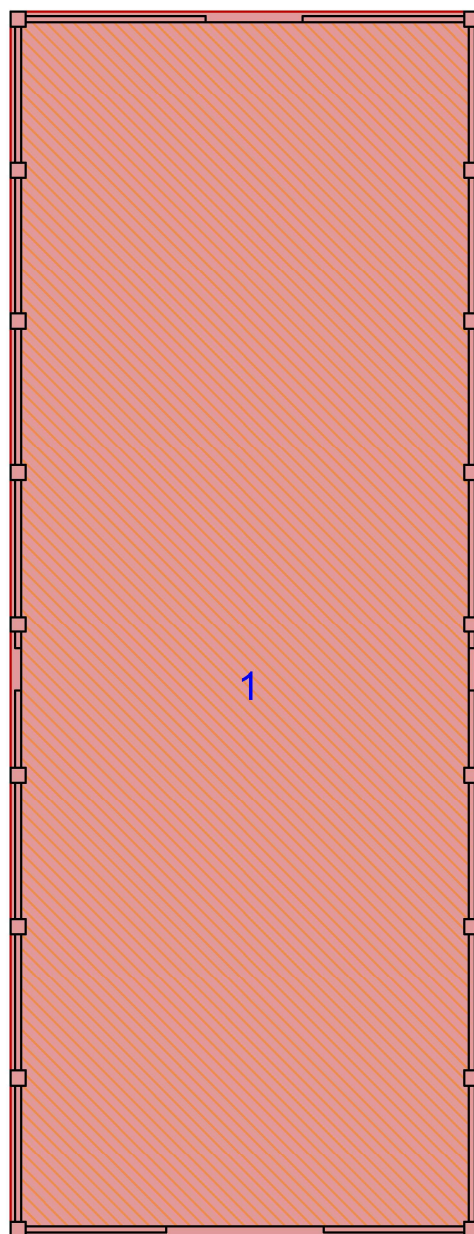
VOLUME LORDO

Piano terra:

1) 4,40 (h) x 616,59 = 2712,00 mc

2) 5,80 (h) x 306 = 1773,00 mc

Totale: 4485,00 mc



PIANTA PIANO TERRA
Scala 1:250

LOC. MANDRIA
CAPANNONE (conc 936/1994)

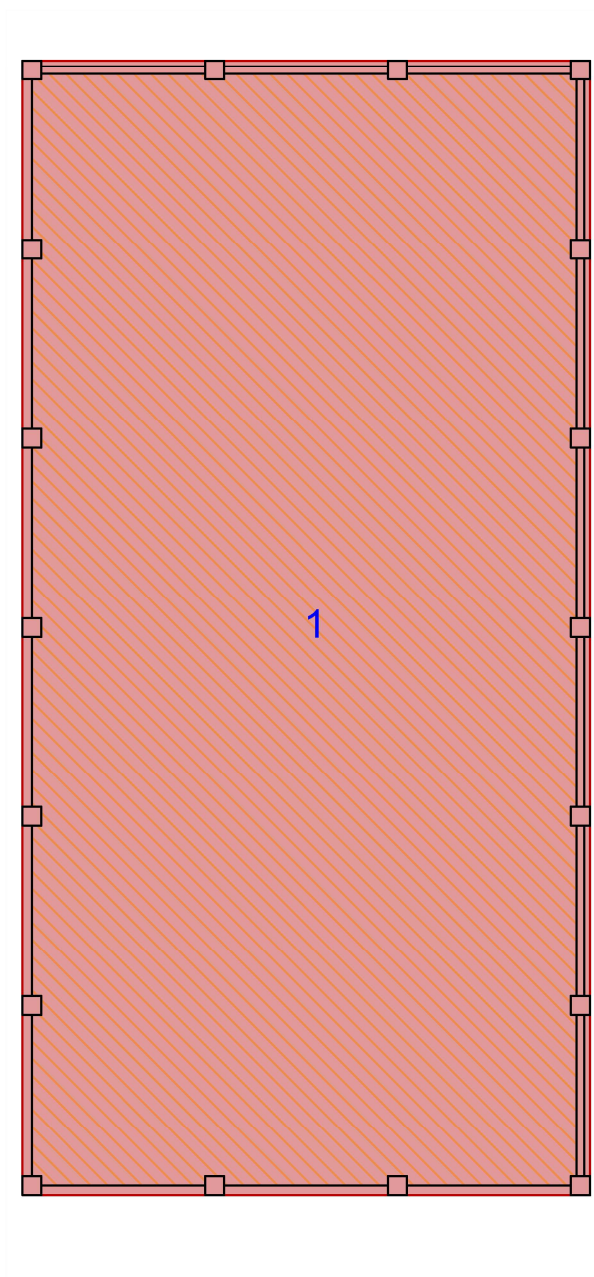
SUPERFICIE UTILE LORDA

Piano terra: 627,50 mq

VOLUME LORDO :

Piano terra:

1) 5,47 (h) x 627,75 = 3434,00 mc



PIANTA PIANO TERRA
Scala 1:200

LOC. LEONCELLI
CAPANNONE (conc. 81/1998)

SUPERFICIE UTILE LORDA

Piano terra: 450,00 mq

VOLUME LORDO

Piano terra:

1) 5,70 (h) x 450,00=2565 mc